

First Presbyterian Church of North East

THE EXCITER NEWS

WEEKLY SERVICES AND OTHER NEWS TO KNOW

JOIN US FOR WORSHIP EACH SUNDAY AT 10:30 AM (ET). Services are offered in-person and online via Facebook LIVE. If you are able, come on out for worship and fellowship with your church family! The bulletin and announcements are posted at FPCNE.ORG.

WEDNESDAY EVENING PRAYER AND DEVOTION IS HELD EACH WEDNESDAY AT 7:00 PM (ET) ON FACEBOOK LIVE. Spend a few minutes with Pastor Gregg for a mid-week time of prayer and devotion. A

JULY IS FPCNE'S MONTH TO HELP AT THE NORTH EAST COMMUNITY FOOD PANTRY. We need two people each on Friday and Saturday mornings during the month of July on July 8, 9, 15, 16, 22, 23, 29 and 30. A sign-up sheet is in the Assembly Room. Thank you!

GOT FLOWERS BLOOMING IN YOUR GARDEN? Share them with your church family on Sunday mornings and help to beautify our sanctuary.

JOIN OUR E-PRAYER CHAIN. Speak with Pastor Gregg or email Jane Livingston at jlivingston@neo.rr.com to be added. We have a very active prayer chain, and it's wonderful to lift up our church members, friends and family for prayer needs throughout the week.

GOT AN ANNOUNCEMENT OR CALENDAR EVENT FOR THE BULLETIN?

Please email Jane Livingston at jlivingston@neo.rr.com by Wednesday.

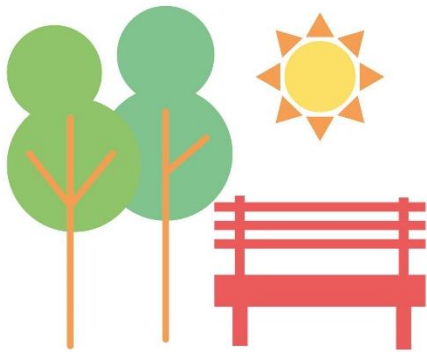
SIGN UP TO HOST COFFEE HOUR. Hosting coffee hour is easy. We have coffee, drinks, accompaniments, and all paper products on hand. All you need to do is make the coffee and drinks, set out the necessary supplies and "host." If you'd like to provide simple snacks or cookies, it is appreciated but not required.

IF YOU HAVE A PRAYER REQUEST, JOY, OR CONCERN TO SHARE, please speak with Pastor Gregg or call or text his cell phone at (814) 460-3123. You can also email our prayer chain at jlivingston@neo.rr.com or text Jane Livingston at (814) 504-1135.

YOU CAN PROVIDE FLOWERS FOR OUR CHANCEL IN HONOR OR MEMORY OF A LOVED ONE OR OCCASION. The flower sign-up sheet is posted on the bulletin board outside of the church office. Please email Jane (jlivingston@neo.rr.com) and provide her with information for the bulletin.



SIGN UP TO HELP THE PRESBYTERIAN WOMEN WITH CHERRY PIES! We will be making, baking, and selling cherry pies this year for the 2022 Cherry Festival. There are jobs for everyone of all ages and all skill-levels! Sign-up sheets are in the Assembly Room. We will be making pies on July 5-8, beginning each morning about 7:00 AM and working until about noon. You can sign up for 1 hour or for the whole time. Invite your family and friends along to help with this mission fundraiser for the Presbyterian Women's Association.



OUR ANNUAL OUTDOOR WORSHIP SERVICE WILL BE HELD ON SUNDAY, SEPTEMBER 4 IN GIBSON PARK AT 10:00 AM

Please bring a lawn chair or blanket for sitting. Our friends from Park United Methodist Church will be joining us again this year. In the event of rain, we will hold the service indoors at FPCNE. For our online worshippers, join us from outdoors wherever you are!

GIVING YOUR TITHE AND GIFTS BEYOND

There are four easy ways to give your financial gift to the church:

1. For in-person worshippers, place your envelopes in the plates at the back of the sanctuary.
2. Send in your financial support via the **USPS to 25 West Main Street, North East PA 16428.**
3. Contact the church office (814-725-8641) to set up **direct deposit** from your bank account to the church.
4. You can also now give through **PayPal**. Just click on the link: paypal.me/fpcne. Or click on the "Shop Now" button on the church Facebook page, which will take you to the link.

CONTACT INFO YOU MIGHT NEED

- Contact Pastor Gregg anytime at (814) 460-3123 (call or text) and pastortownsend@yahoo.com.
- Contact music director Jane Livingston at (814) 504-1135 (call or text) and jlivingston@neo.rr.com.